

# Fairhazel Gardens

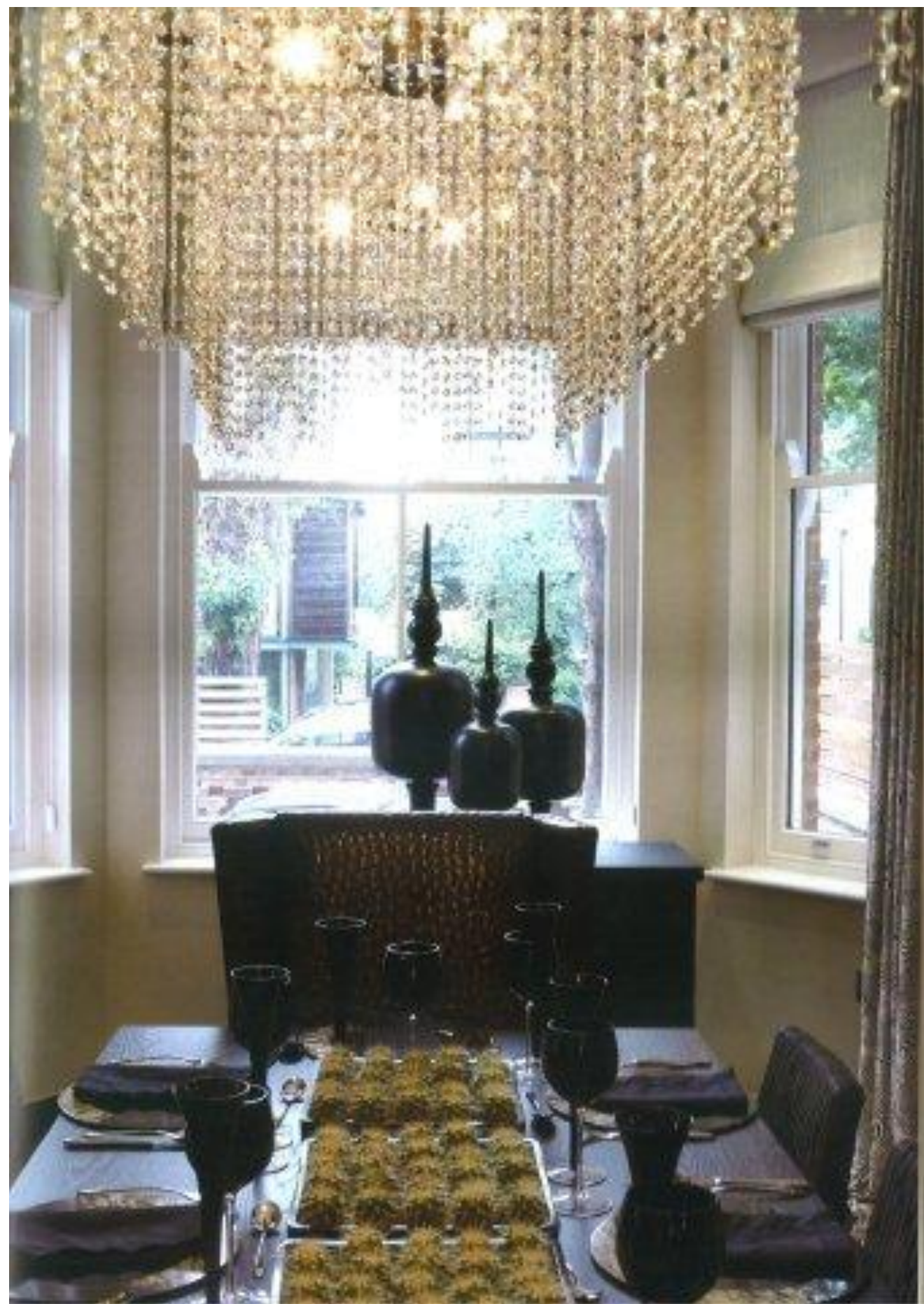
Fairhazel Gardens



2011.02 / Kelly Hopper设计 2011.11 / Kelly Hopper 摄影 010 5161 1111 / www.kellyhopperinterior.com

Company: Kelly Hopper Interiors  
Designer: Kelly Hopper  
Project Location: London  
Website: www.kellyhopperinterior.com





Large terraces have great views with intentionally restrained interior (Belgian Kelly Hoppen) to create a unique, elegant and stylish terrace filled with luxury fabrics and furniture sourced from around the globe. This is a spectacular 5,547 sq ft retreat. The spacious layout and well-planned accommodation comprises a formal dining reception room, living room, kitchen, breakfast room, utility room, guest WC, magnificent master bedroom suite with a sitting room, 2 dressing rooms and 2 en-suite bathrooms (1 with 2 suites), 2 further double bedrooms (1 with dressing room), fourth bedroom with a second bathroom and a multipurpose top floor mezzanine that could be utilized as a cinema room with a roof terrace or could be reconfigured to accommodate a further 2 bedrooms.











